

| | |
|--------------------------|---------------|
| NID M Des 2016 – Part II | Center : |
| Student Name: | Date : |
| Marks: _____ / 50 marks | Time: 3 hours |

Please read the questions carefully and answers in the space provided

Q. 1. Read the following scenarios:

1. **A glass** that is half filled goes in search of water to fill itself.
2. **A circle** wakes up one day to find it has no option but to share its space with a triangle.
3. **A little** girl meets a lioness who is lost trying to find her way out of the intimidating city.

Choose any one scenario and write down three challenges that the first character (highlighted in bold) might face and also write solutions for each of the three challenges in the space provided.

The scenario chosen: *A glass half filled*

Challenge 1 *The glass might get lost finding water and may forget its way back.*

Solution *The glass decides to leave behind some clues which are its footmarks next to the every 10th tree. The marks will be in the shape of a circle. and thus easy to identify.*

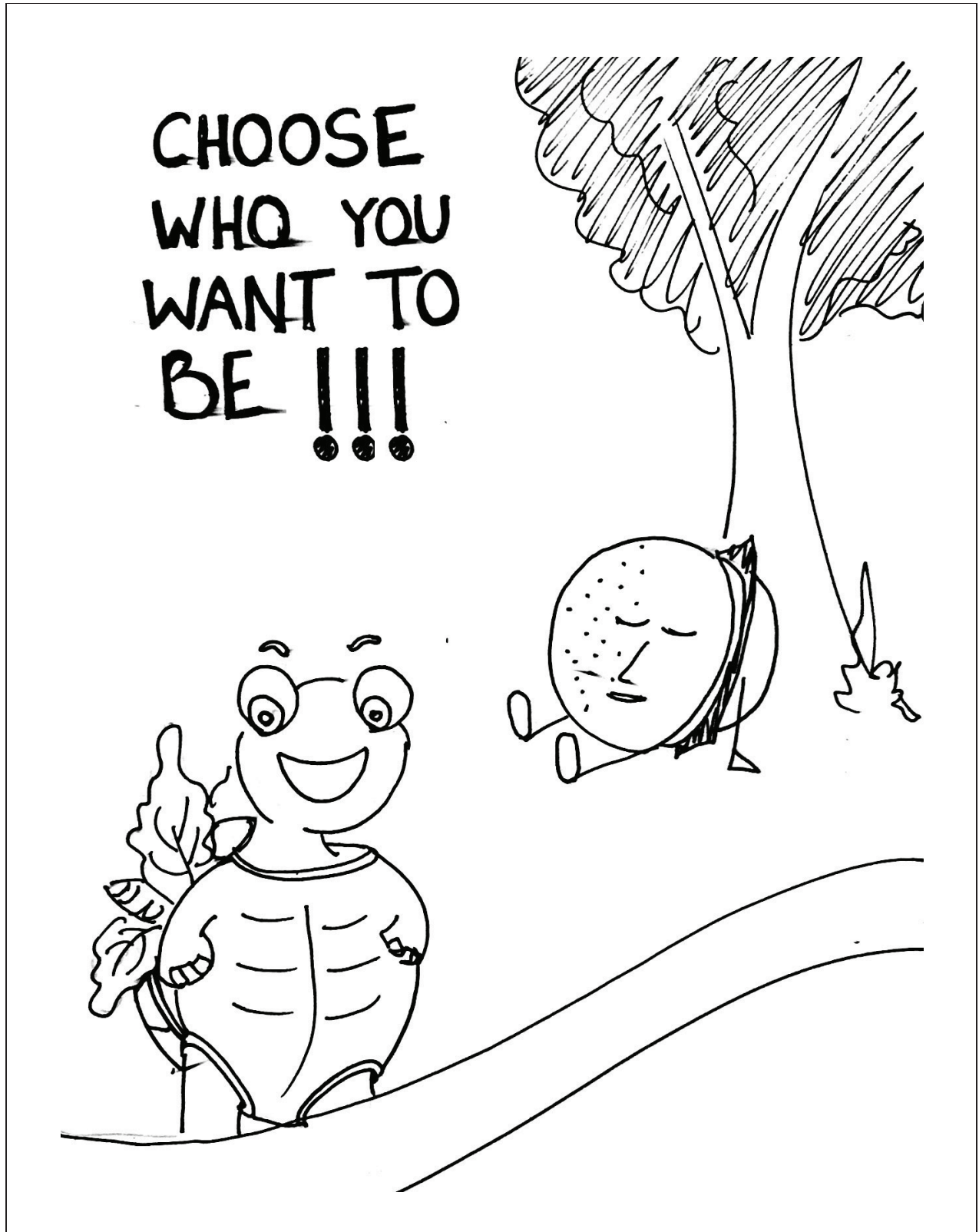
Challenge 2 The glass has finally found a lake and refilled itself. The task now is that it has to climb uphill which is even more difficult as its weight has increased and he might finish the filled up water by drinking it as and when it gets tired.

Solution The glass decides to take a lift from an animal. He requests a horse to drop him to the top of the hill. This way the glass also has some company on its way back. & the fact that he has left clues, it will be easier to guide the horse on the track.

Challenge 3 Since the glass is taking a horse back ride, there are chances that the refilled water may fall out with the jerks. So, by the time the glass reaches back it may have exhausted all the water.

Solution The glass decides to quickly pick up some leaves of a tree and covers its head. Now the water remains safe and the glass also gets some shade from the sun hitting its head and drinking the water.

- Q. 2. In the given space below sketch a poster promoting healthy diet among the youth.
Your poster must include a burger and a tortoise. Give an appropriate title in English,
of less than six words



Q. 3. Read the following scenario:

"A creature that is part human, part an endangered species (plant or animal) and part automobile, and who is unable to decide whether to travel into the past or future".

Visualize and draw the above scenario in a 'single frame' given below.

